

wallbox 



# PULSAR MAX

Going electric just got easier.

PULSAR MAX

## **Tougher. Simpler. Smarter.**

Pulsar Max is the smart home charger specially designed to unlock time, money and energy savings for everyday electric vehicle drivers. Get top charging speeds while minimizing your daily energy use, so you can enjoy your electric vehicle to the fullest.



✓ **Powerful, fast charging**

Up to 8x faster charging

✓ **Easy installation**

New easy-to-install design reduces installation time and costs

✓ **Save money and energy**

Avoid high energy tariffs with smart charging schedules

✓ **Solar charging compatible**

Take full advantage of your solar panels

✓ **Ultra-Fast Advanced CPU**

High processing speeds and future proof software, built in-house specifically for charging.

✓ **Weather and dust protection**

Perfect for indoor or outdoor installation, with a scratch-resistant matte finish



## PULSAR MAX

# Even more to love



### Fast

Up to 22kW of power



### Compatible

Options for any EV  
and any home



### Hands-Free

Control via your Amazon  
Alexa or Google Assistant\*



### Compact

Just 1.3kg



### Protected

Enjoy a 3-year warranty with  
options to extend



### Connected

Control from the myWallbox  
app via Wi-Fi or Bluetooth



*\*Both features available in Australia, New Zealand, UK, Ireland and Spain. Amazon Alexa is also available in France and Germany.*

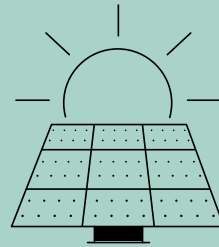
PULSAR MAX

## Upgrade your experience with Wallbox Energy Management Solutions

*Enjoy even more sustainable, cost-efficient charging at home.*

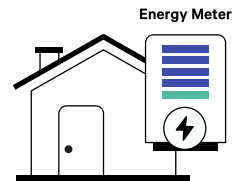
### Eco-Smart Solar EV Charging

Use the surplus solar energy from your solar panels to charge your EV. Choose to charge with 100% solar energy, or a mix of solar and grid energy.\*



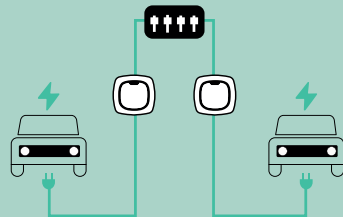
### Power Boost Dynamic Load Balancing

Balance the available energy between your home and car, in real-time, so you can run your large appliances and still charge at high speeds! No need for costly upgrades to your electrical panel.\*



### Power Sharing Charge Multiple EVs

Install multiple chargers on the same circuit to distribute the available energy dynamically and charge all connected cars at once.\*\*



**Ask your sales representative how you can upgrade your smart charging system today.**

*\*Power Meter required.*

*\*\*Eco-Smart not compatible with Power Sharing.*

## MYWALLBOX APP

# Control at your fingertips with the myWallbox app

- Monitor the status of your charger and control it from anywhere.
- Get energy use and spending statistics in real-time.
- Secure your charger with remote locking and unlocking.
- Access all Energy Management Solution features.
- **NEW!** Activate Halo Light Standby so the light will stay off until you interact with the charger.



## Save while you sleep with easy scheduling

myWallbox provides an off-peak charging schedule suggestion right at onboarding. Charge with energy that's cleaner and cheaper, depending on your energy provider and plan, with just one click.\*

*\*Available in UK, Ireland, Australia, NZ, Spain and Norway.*

## PULSAR MAX

# Product Specifications

### General Specifications

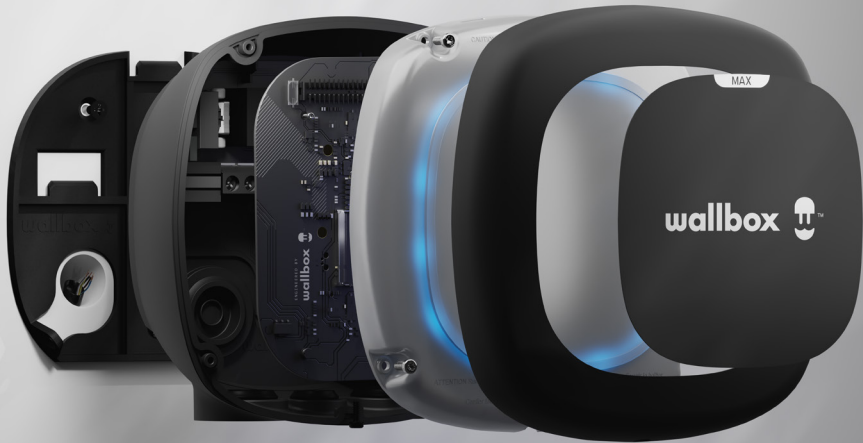
Cable Length:	5m (7m optional)
Charging Mode (IEC 61851-1):	Mode 3
Dimensions:	198 x 201 x 99mm (without cable)
Weight:	1.3kg (without cable)
Operating Temperature:	-25 °C to 50 °C
Storage Temperature:	-10 °C to 70 °C

### User Interface & Communications

Connectivity:	WiFi, Bluetooth
Communication Platforms:	myWallbox, OCPP 1.6j

### Electrical Specifications

Rated Voltage AC $\pm$ 10%:	220-240 V / 380-440 V
Charging Power:	7.4 kW / 22 kW
Rated Current:	32 A (1P) / 32 A (3P)
Connector Type (IEC 62196-2):	Type 1 or Type 2
Cable Width:	up to 13 mm <sup>2</sup>
Configurable Current:	from 6 A to rated current
Rated Frequency:	50 Hz / 60 Hz
Protection Rating:	IP55 / IK10
Surge Category:	CAT III
Residual Current Detection:	DC 6 mA
RCCB:	External RCCB Type A required





[www.wallbox.com](http://www.wallbox.com)

Copyright 2022, Wallbox Chargers S.L.